



JUMEIRAH  
GOLF ESTATES

THE NEXT CHAPTER

wasl

# THE NEXT CHAPTER



**MANDARIN ORIENTAL**



**TENNIS STADIUM**



**EQUESTRIAN CENTER**



**GOLF**



# MANDARIN ORIENTAL





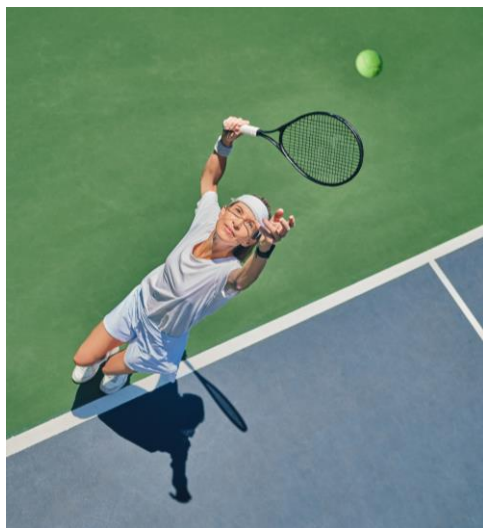
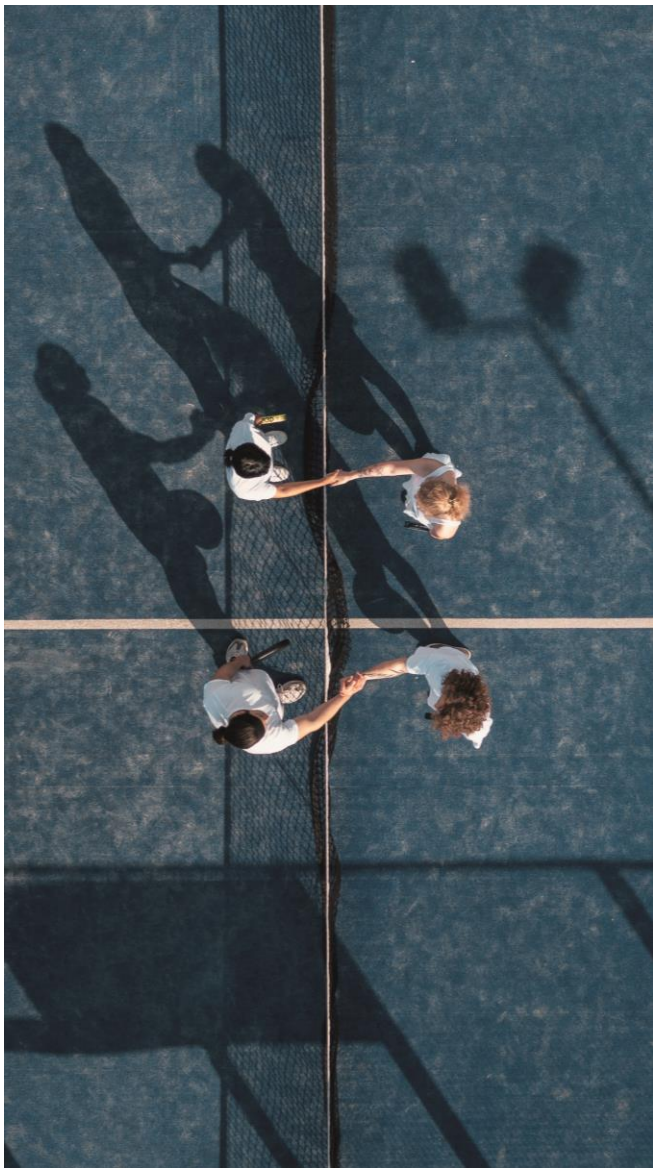


# TENNIS STADIUM



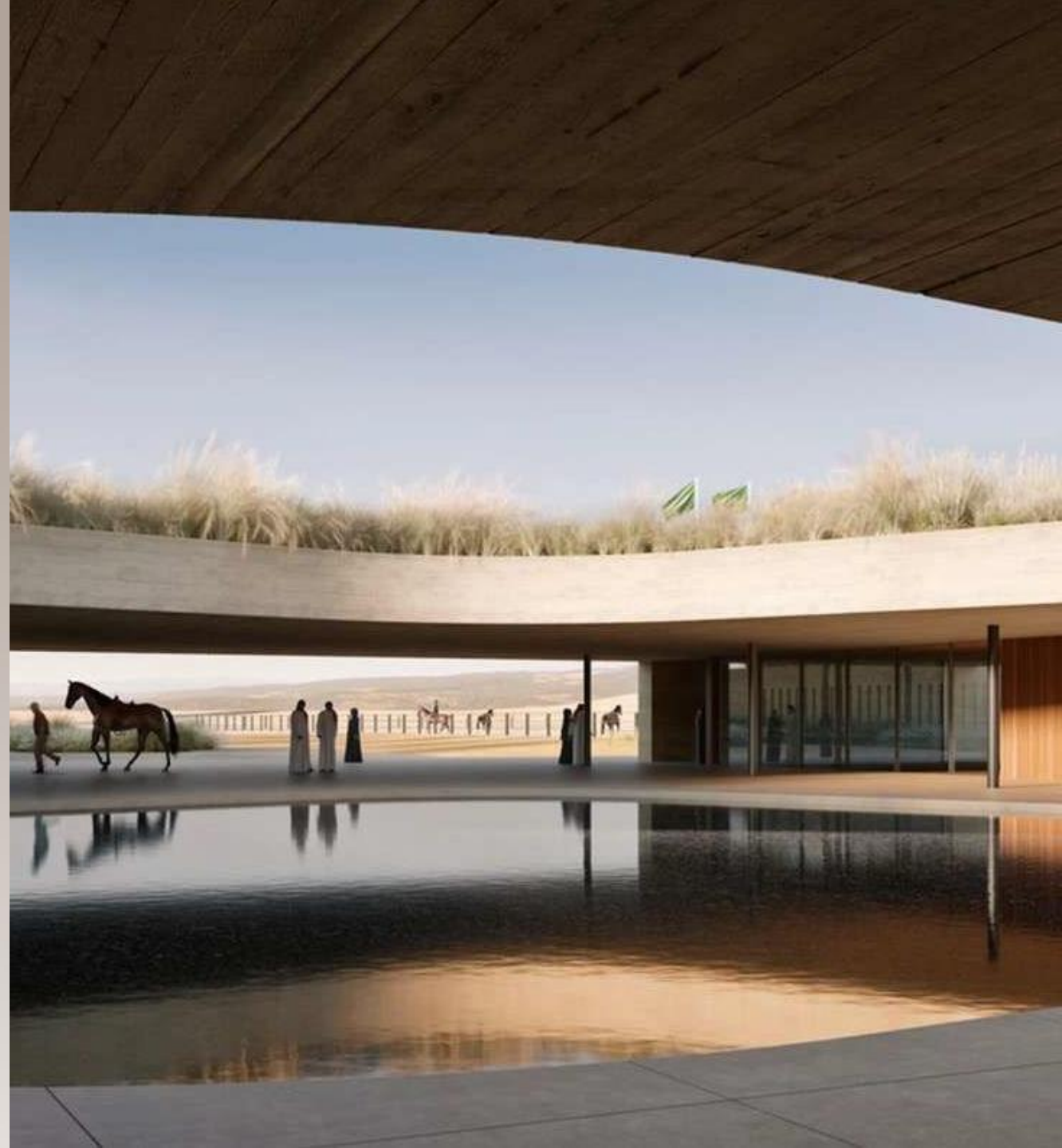








# EQUESTRIAN VILLAGE













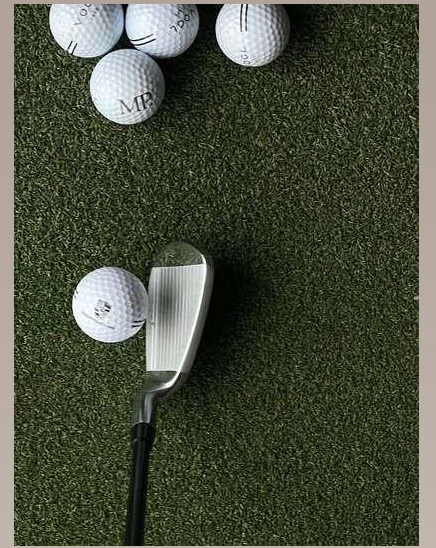


GOLF













# MASTER PLAN











# Master Plan

## Key Program

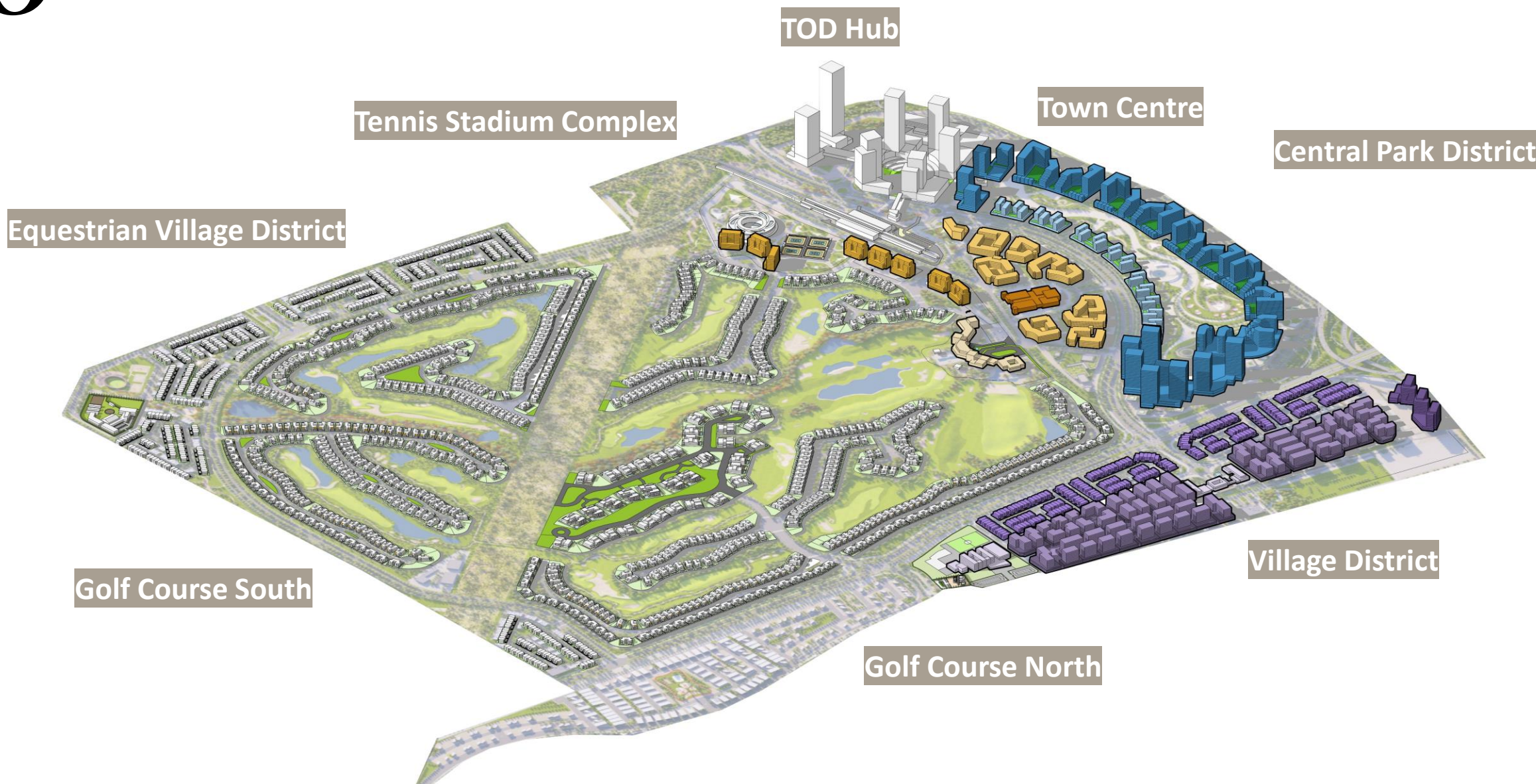
- 1 Town Center
- 2 Golf Clubhouse
- 3 Golf Hotel
- 4 Tennis Stadium Complex
- 5 Golf View Apartment
- 6 Etihad Rail Station
- 7 TOD
- 8 Central Park
- 9 Golf Course
- 10 Driving Range
- 11 Equestrian Center
- 12 Equestrian Trail
- 13 Equestrian Village
- 14 School
- 15 Village District
- 16 Central Park Apartment
- 17 Golf Villa
- 18 Hilltop Mansion
- 19 Town House
- 20 Mosque
- 21 Hospital
- 22 Village District Community Center





# 6 DISTRICTS

Total Plot Size (sqm)  
**4.68 Million**







# VILLAGE DISTRICT



# VILLAGE DISTRICT Estate Homes



District Land Area (sqm)

**457,244**

GFA (sqm)

**589,643**

Unit Number

**2,976**









# CENTRAL PARK





# CENTRAL PARK



District Land Area (sqm)

**385,130**

Central Park area (sqm)

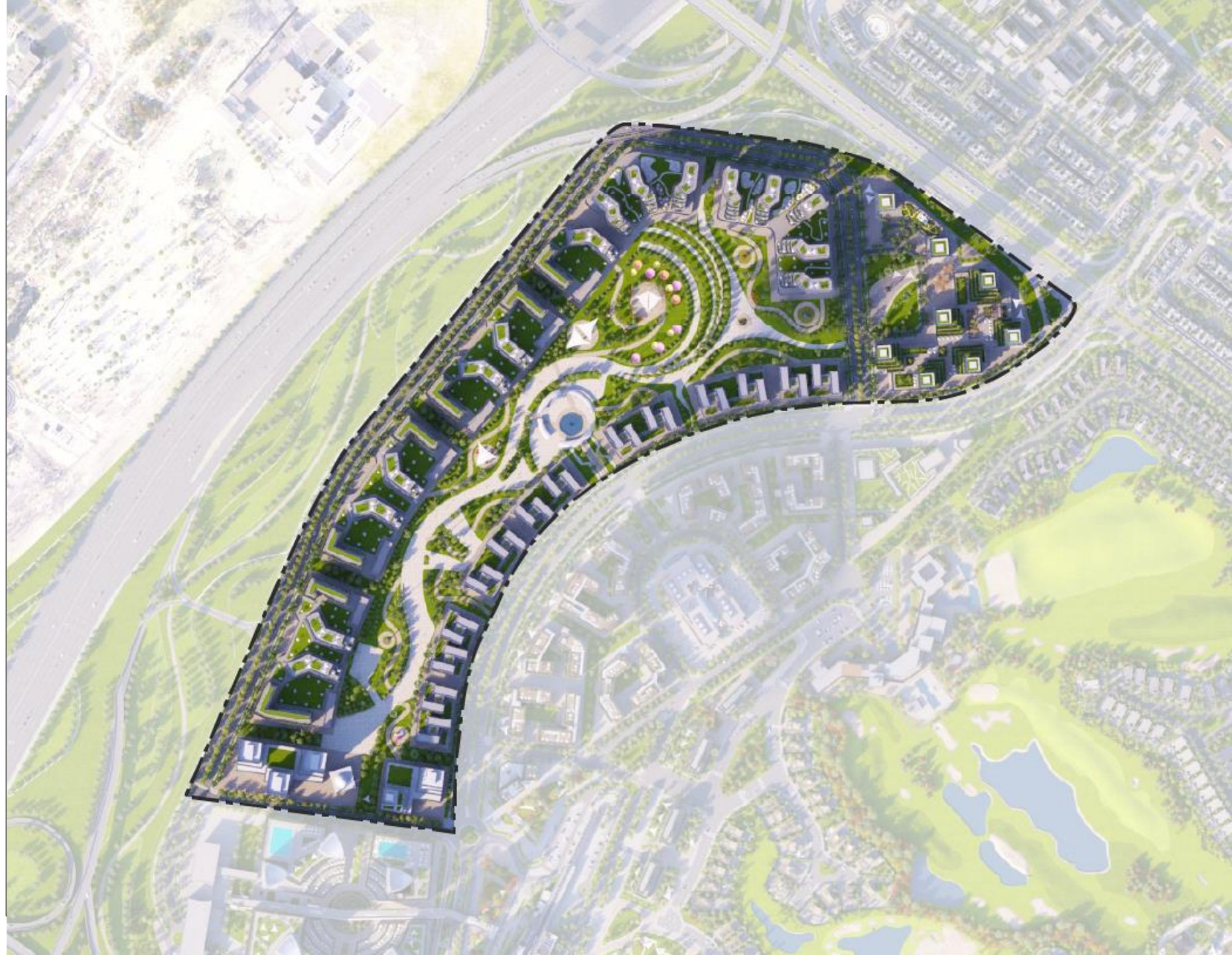
**122,847**

GFA (sqm)

**866,636**

Unit Number

**5,088**









# GOLF VILLAS





# GOLF COURSE (NORTH & SOUTH)



District Land Area (sqm)

**2,224,821**

GFA (sqm)

**585,303**

Unit Number

**940**







Villa  
Nine







# TOWN CENTRE





# TOWN CENTRE



District Land Area (sqm)

**133,303**

GFA (sqm)

**221,248**

86% Residential

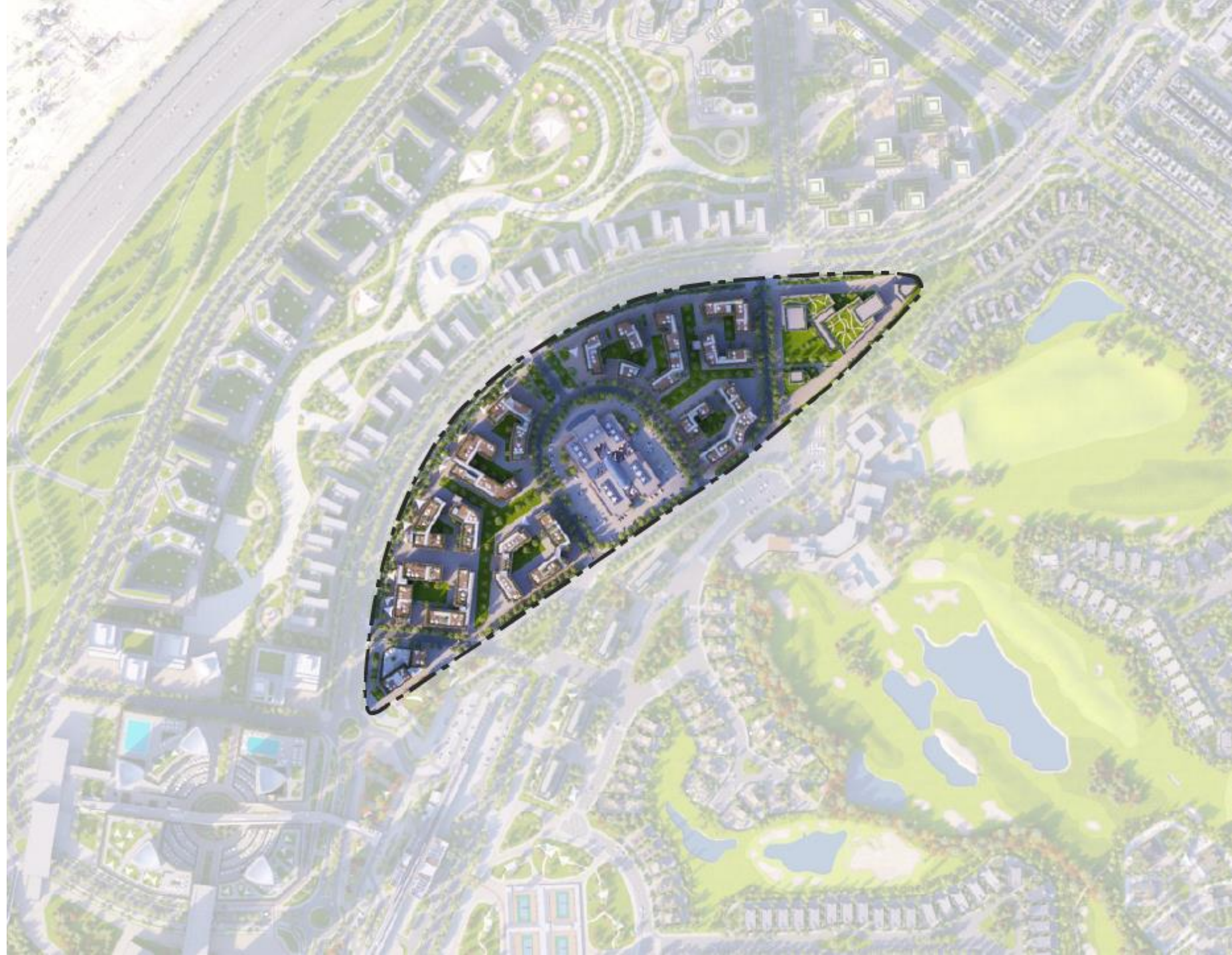
6% Retail

4% Hospitality

4% Amenity

Residential Unit Number

**1,117**







# TENNIS STADIUM



# TENNIS STADIUM



District Land Area (sqm)

**220,712**

GFA (sqm)

**181,537**

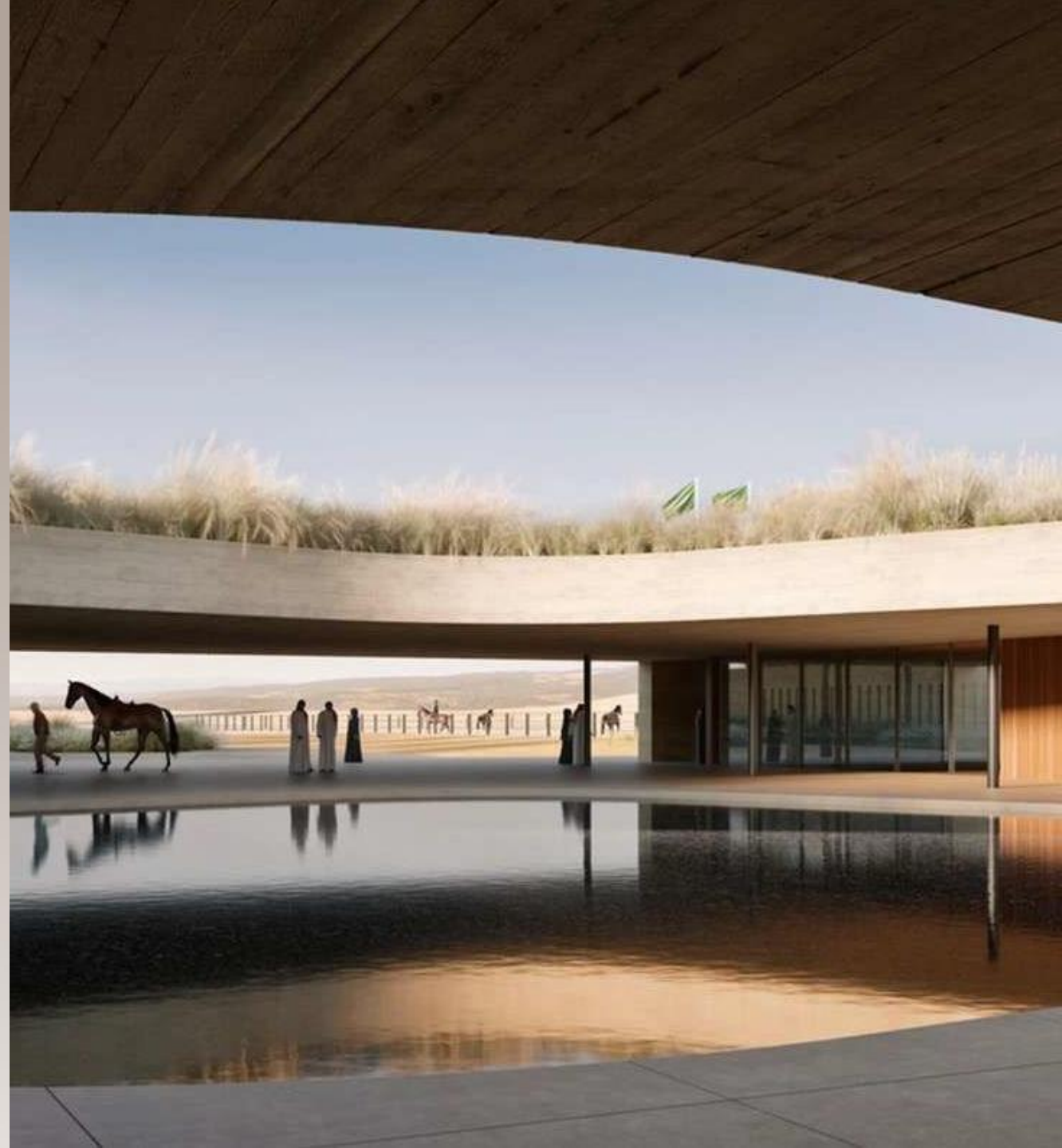
Residential Unit Number

**816**





# EQUESTRIAN VILLAGE





# EQUESTRIAN DISTRICT



District Land Area (sqm)

**369,630**

GFA (sqm)

**122,897**

Unit Number

**512**







JUMEIRAH  
GOLF ESTATES

THE NEXT CHAPTER